

# Supervised Learning of an Abstract Context Model for an Intelligent Environment

Oliver Brdiczka

PRIMA research group  
INRIA Rhône-Alpes

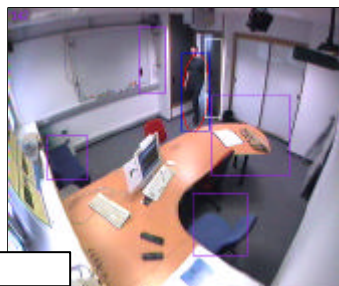
12/10/2005

INSTITUT NATIONAL  
DE RECHERCHES  
EN INFORMATIQUE  
ET EN AUTOMATISME

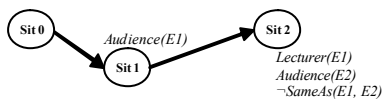
INRIA

## Intelligent Environment

*Sensing Human Behaviour  
&  
Offering Services*



Context: Lecture Room



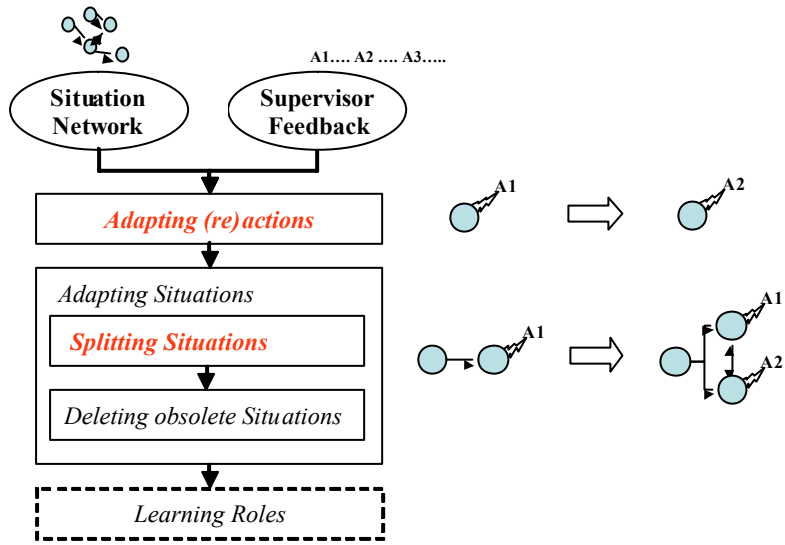
Sit 0 =>  
Sit 1 => *SwitchOnLight*  
Sit 2 => *SwitchOnProjector*

*Abstract Context Model*

- *Entities, Roles, Relations*
- *Situations*
- *System Actions (services)*

INRIA

# Evolving Context Model (Supervised Learning)



See you in front of the Poster!